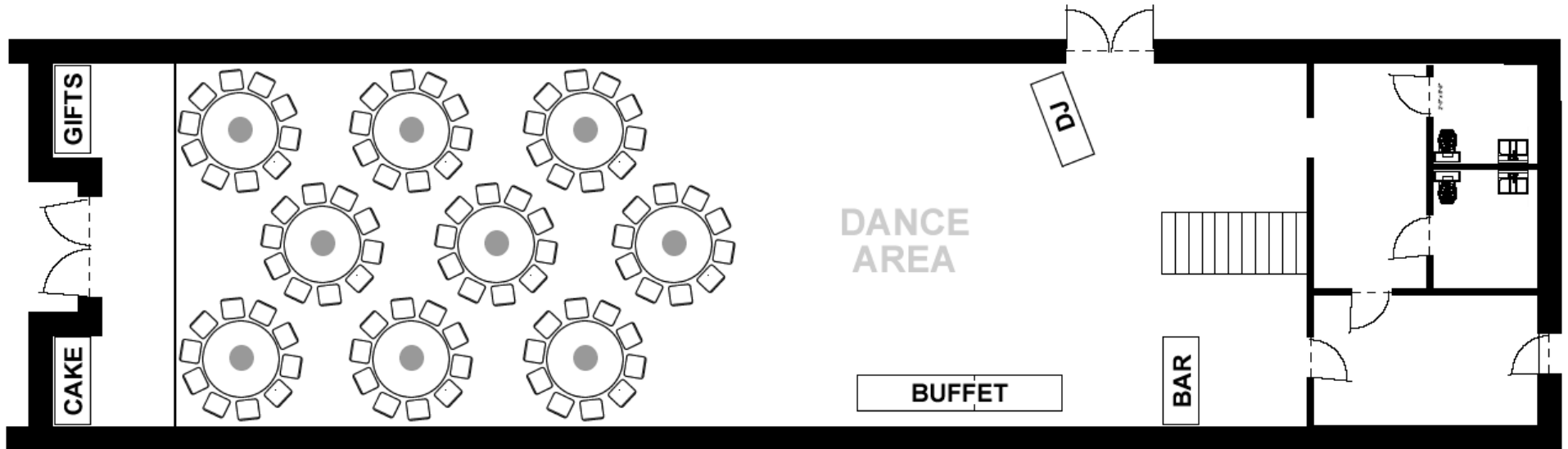


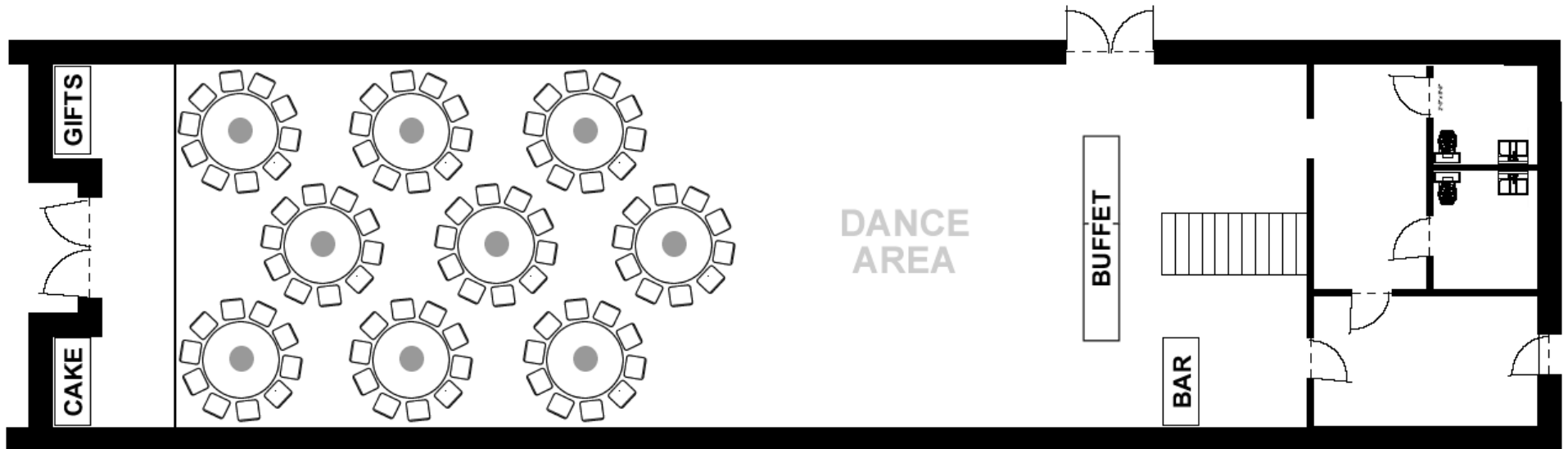
# Layout #1: Reception/Dance

(Seating for 90, Total Capacity 200)



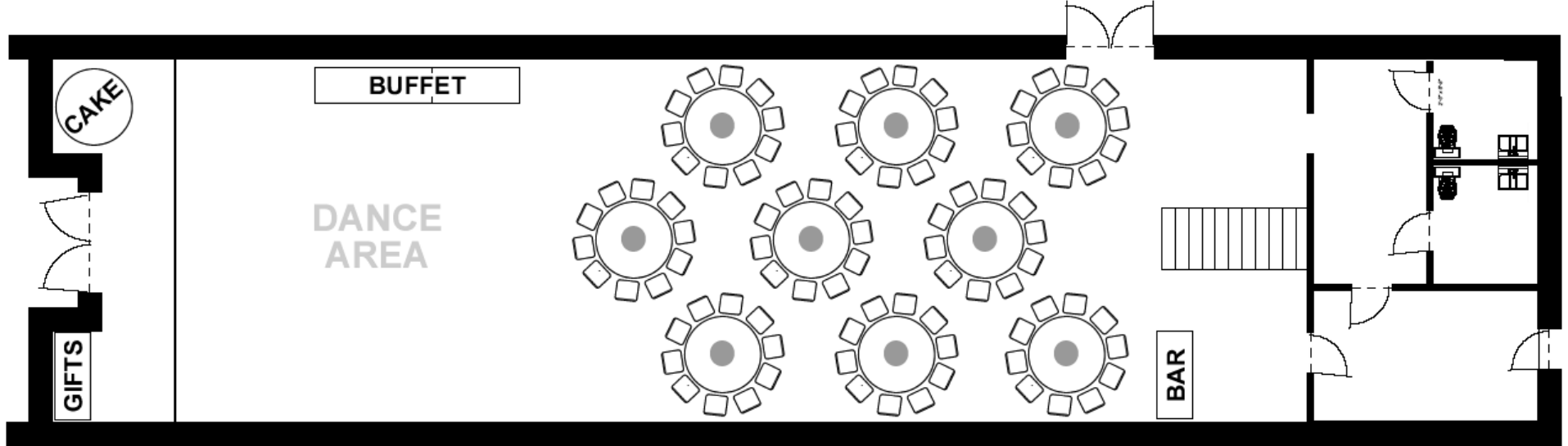
# Layout #2: Reception/Dance

(Seating for 90, Total Capacity 200)



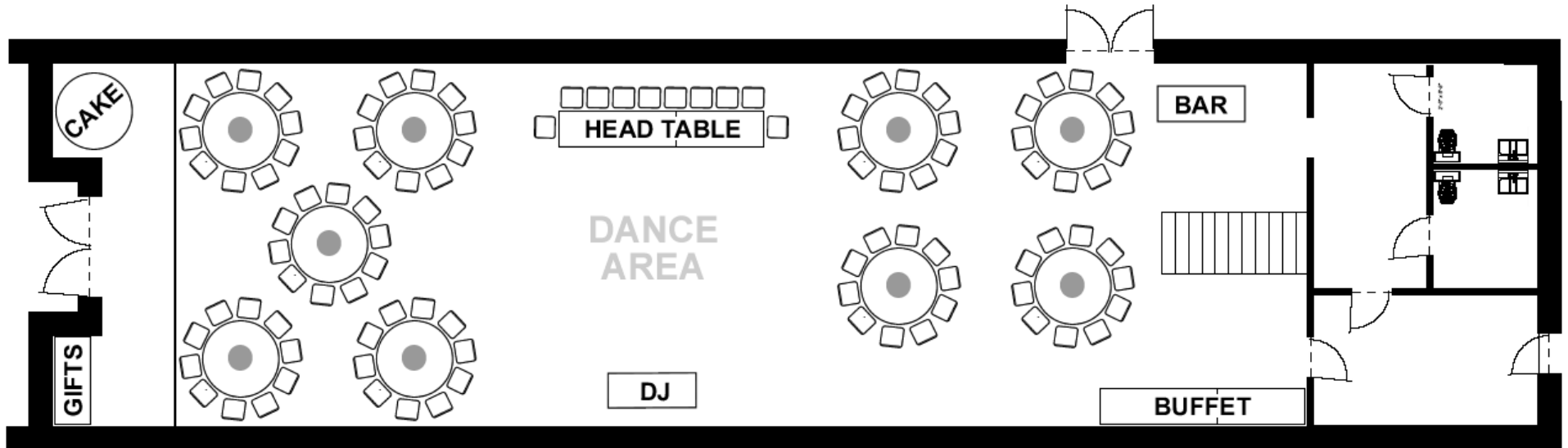
### Layout #3: Reception/Dance

(Seating for 90, Total Capacity 200)



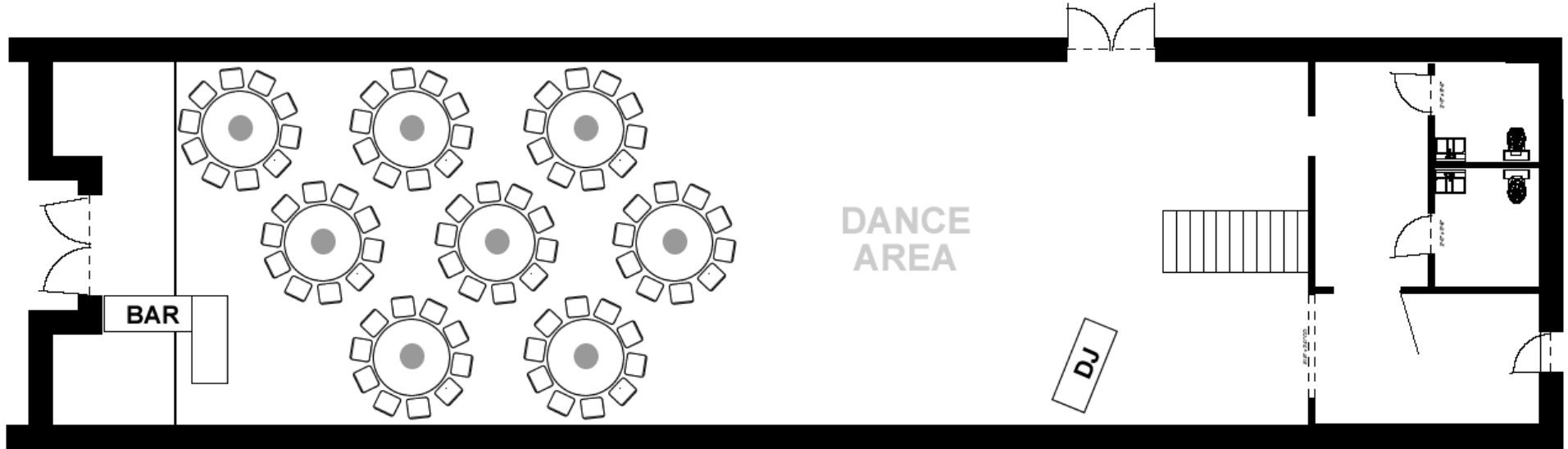
### Layout #4: Reception/Dance

(Seating for 90, Total Capacity 200)



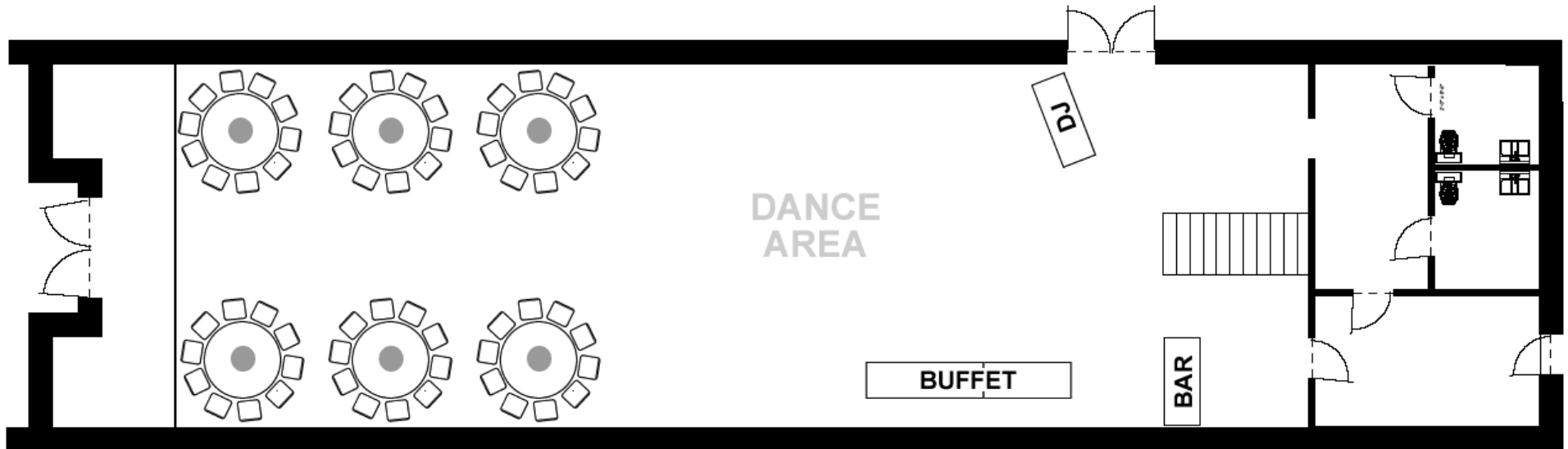
## Layout #5: Reception/Dance

(Seating for 80, Total Capacity 210)



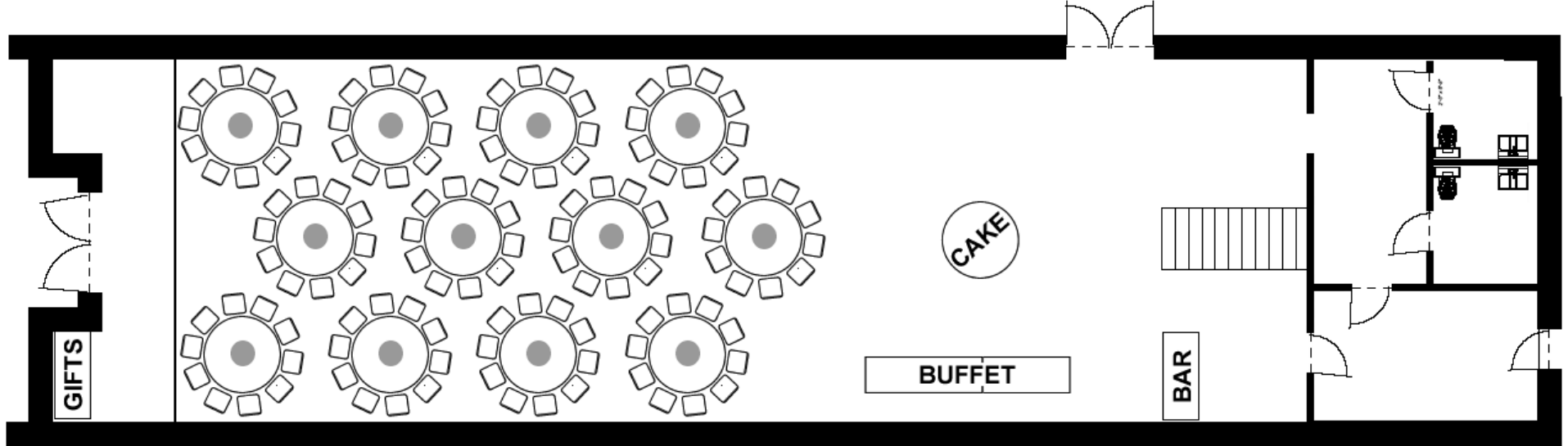
## Layout #6: Reception/Dance

(Seating for 60, Total Capacity 220)



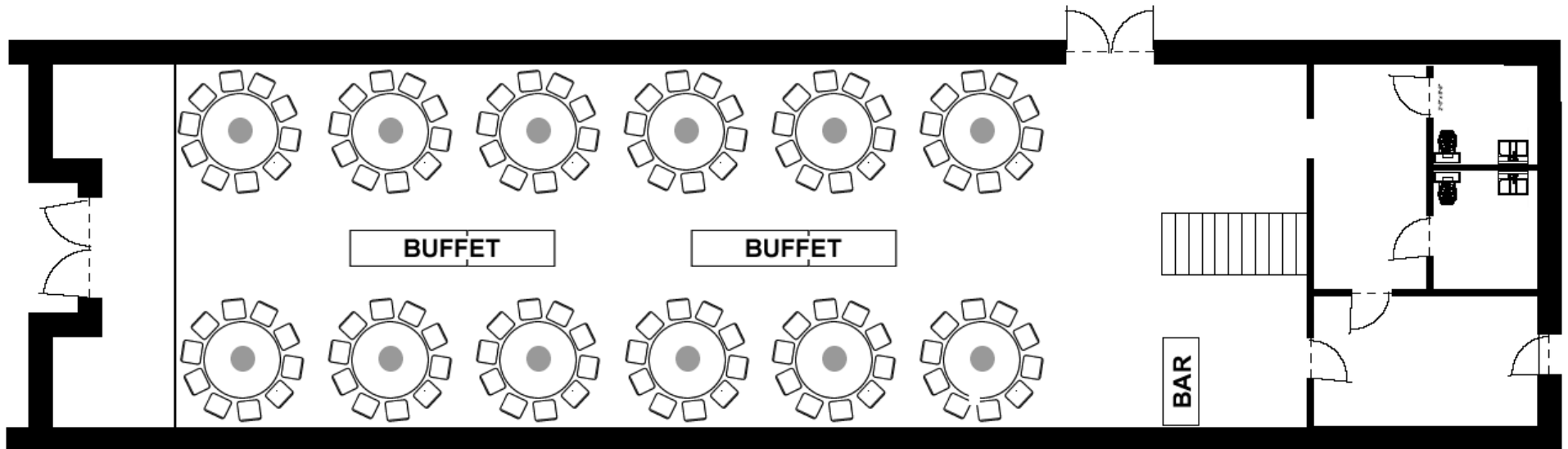
# Layout #7: Reception

(Seating for 120, Total Capacity 120)

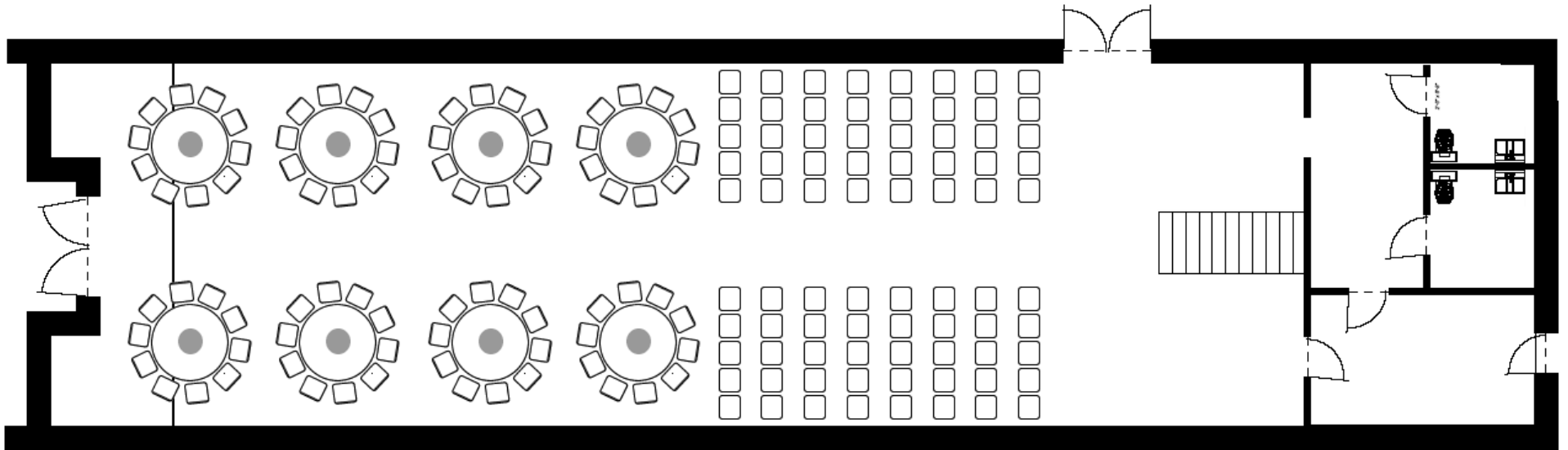


# Layout #8: Reception

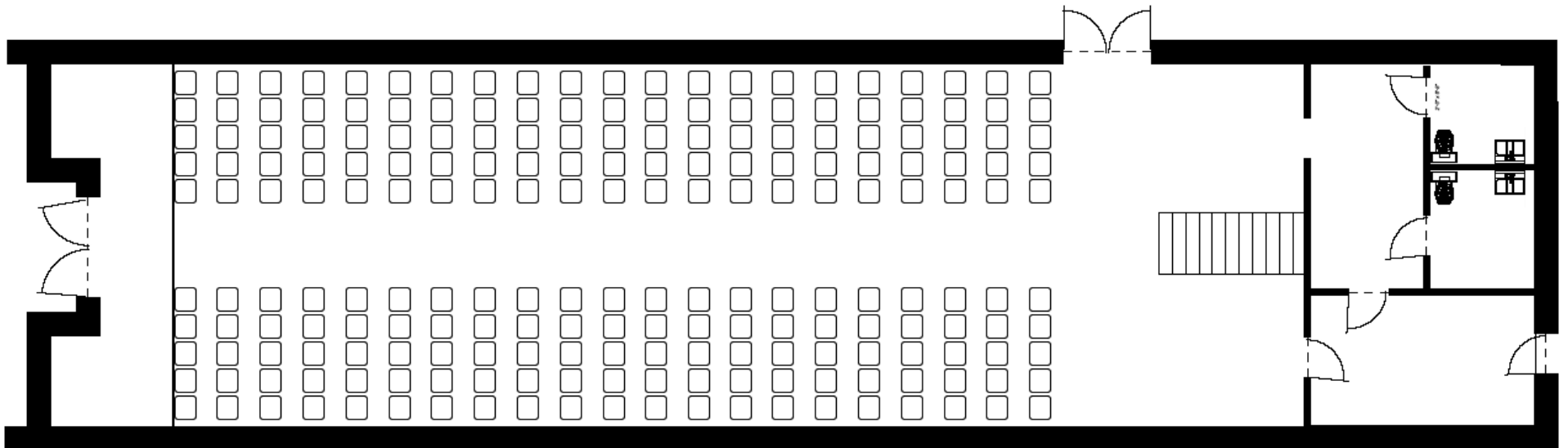
(Seating for 120, Total Capacity 120)



## Layout #9: Wedding and Reception for 80

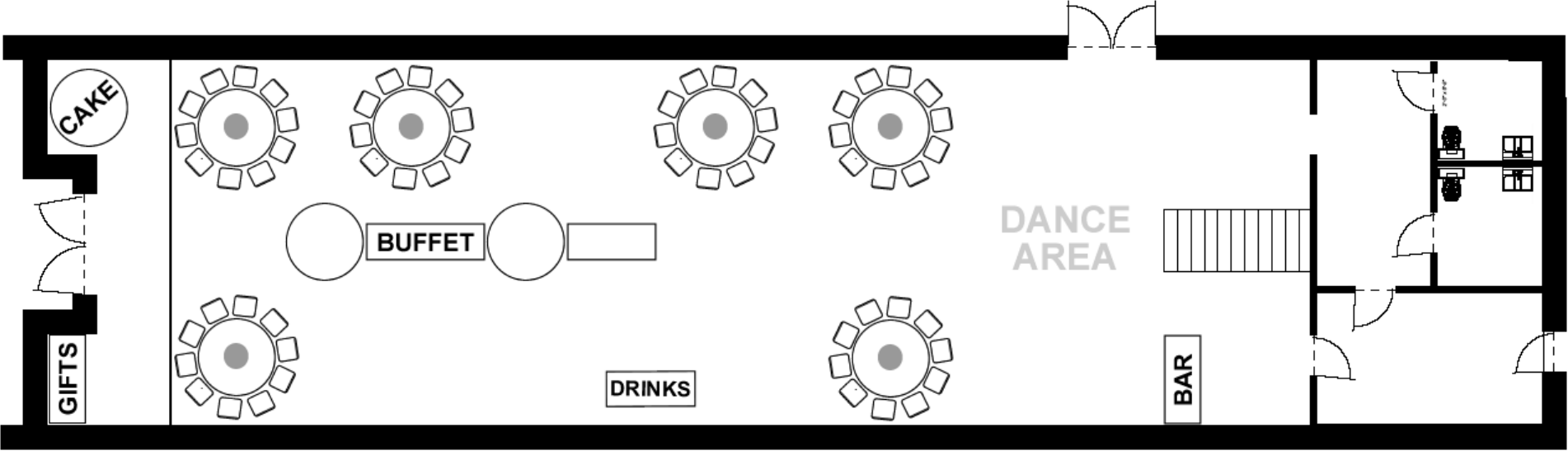


## Layout #10: Wedding/Seminar Seating for 210



# Layout #11: Reception

(Seating for 60, Total Capacity 180)



# Layout #12: Rehearsal Dinner "Single Table" Layout

